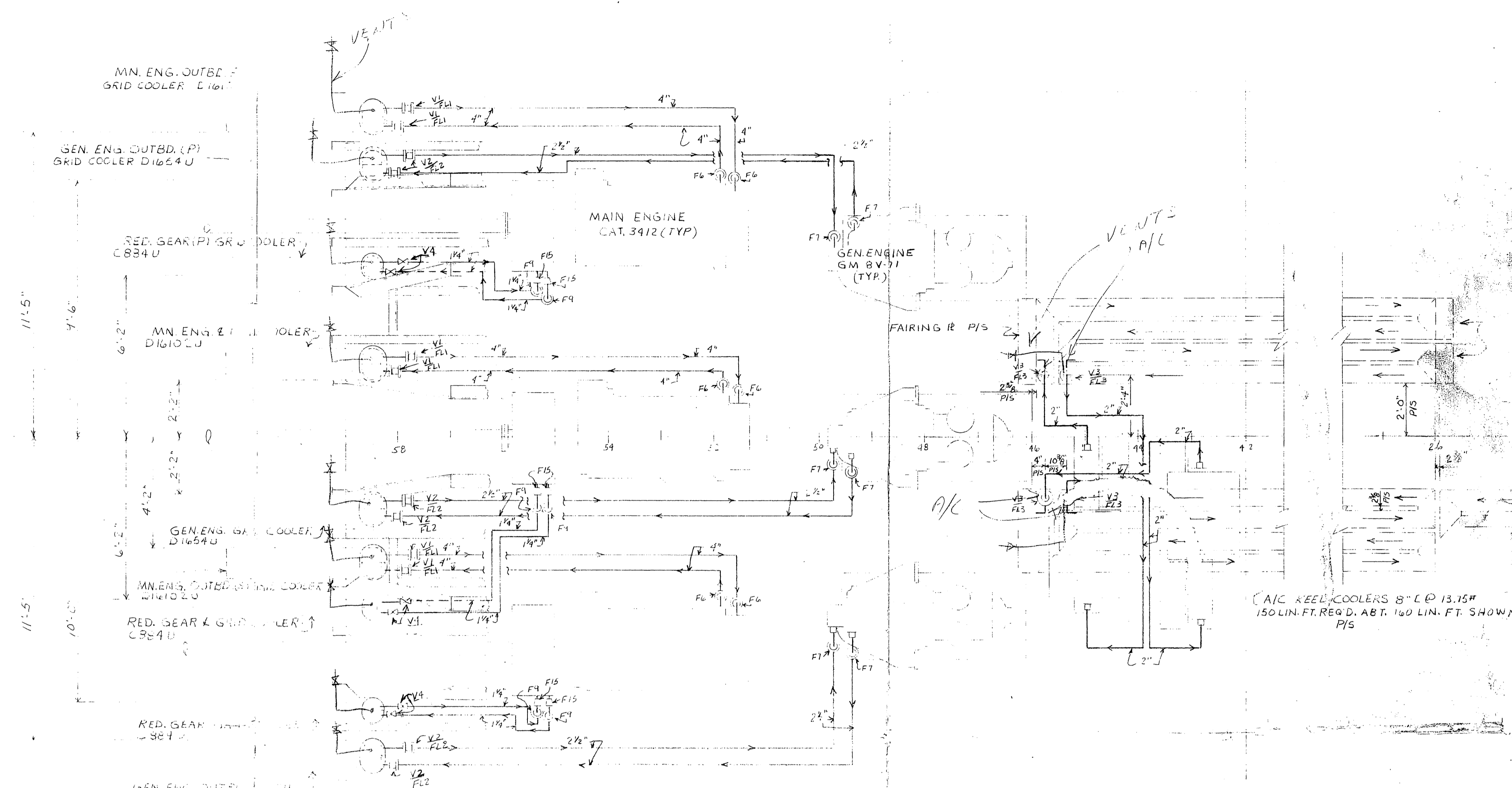
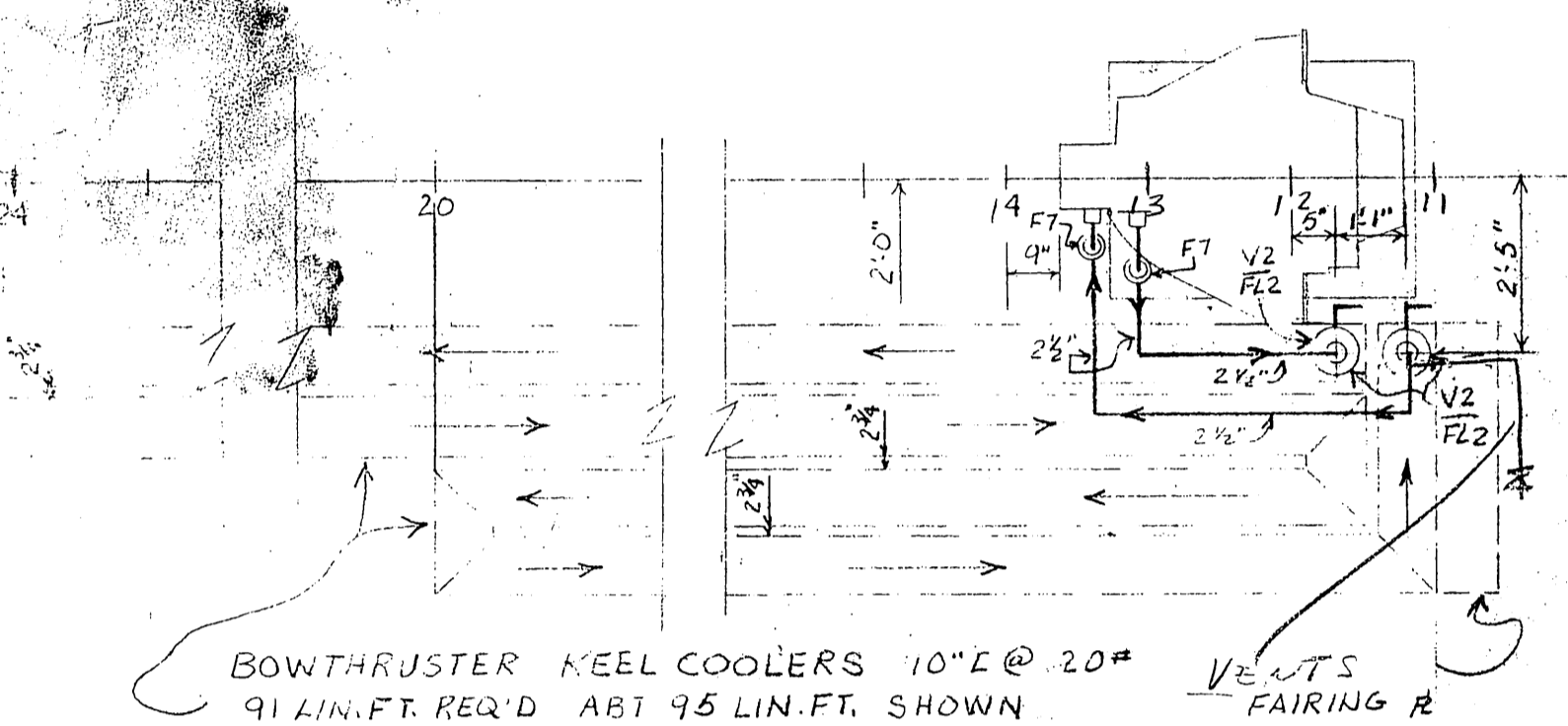


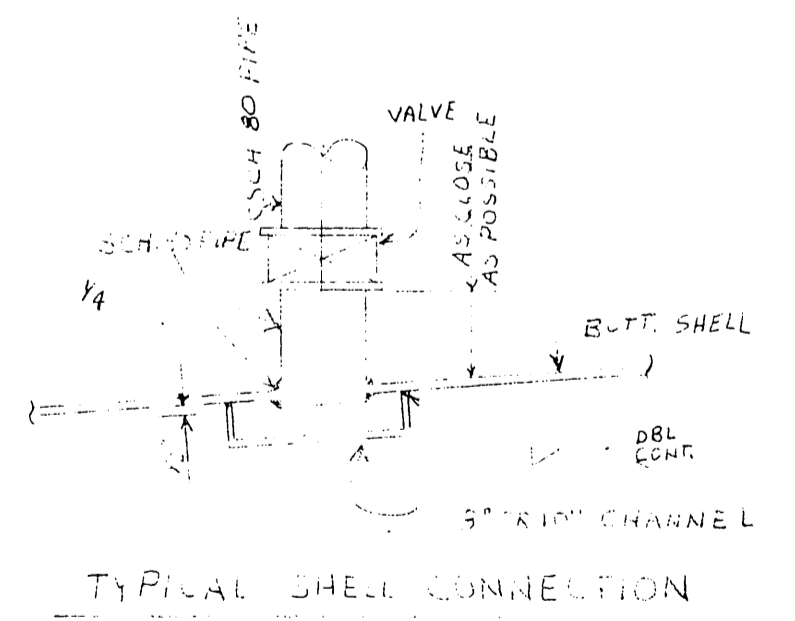
REV. MK.	DESCRIPTION	BY	DATE	APPROV.
1	REVISE MN. ENG. & GEN. ENG. COOLING FROM CHANNEL COOLING TO GRID COOLING. AS REQUESTED BY HUGH SMITH.	B.A.	7/20/81	



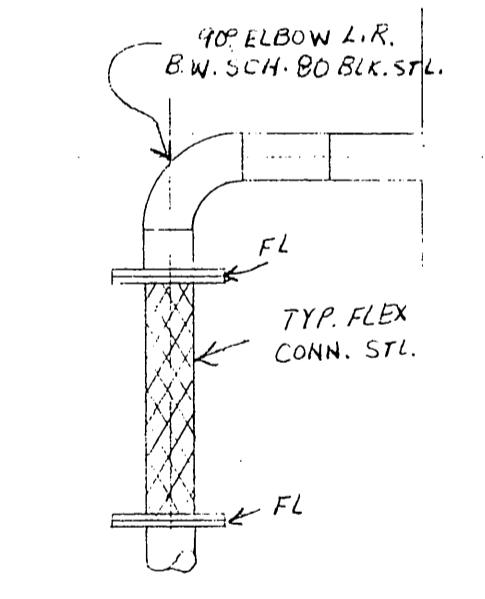
PLAN VIEW  
SCALE 3/8" = 1'-0"



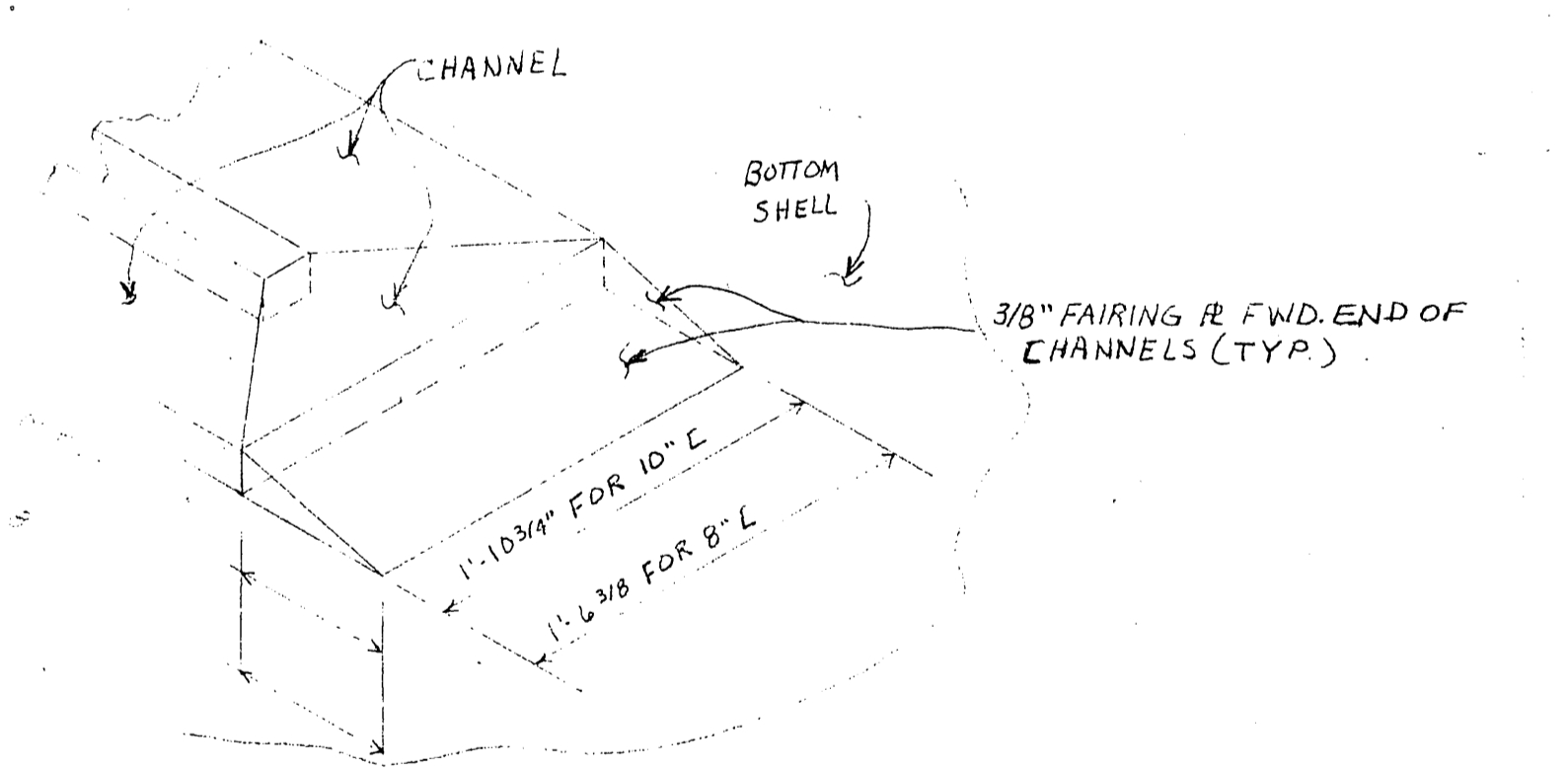
PLAN VIEW OF BOWTHRUSTER KEEL COOLER  
PIPING DIAGRAM  
SCALE 3/8" = 1'-0"



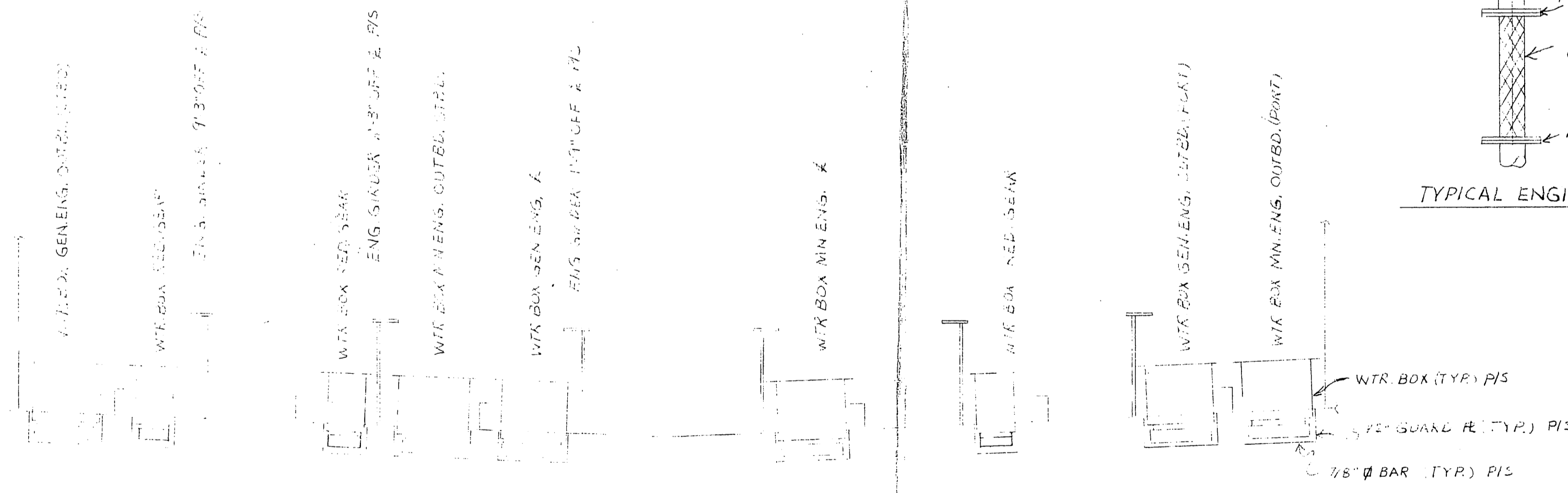
TYPICAL SHELL CONNECTION



TYPICAL ENGINE CONNECT



TYPICAL FAIRING PLATE FOR  
CHANNEL COOLERS  
SCALE 1" = 1'-0"



SECTION 16 FRAME 58 LK. AFT.  
SCALE 1/2" = 1'-0"

NOTE: ALL ENGINE COOLING PIPING PLUS EXHAUST TUBES MUST BE ON THE SAME SIDE

- NOTES:
- 1) ALL PIPING TO BE WELDED TIGHT.
  - 2) ALL WELDS TO BE W/ ABS. & U.S.C.G. REG.
  - 3) WORK TO BE W/ DWG. C-2062-13
  - 4) ANCHOR BOLTS TO BE ACCEPTABLE MANITUDE TO THE COOLERS.
  - 5) PET COCK VALVES TO BE PROVIDED AT THE HIGHEST POINT TO ELIMINATE TRAPPED AIR.

CHECK PRINT.

MISSISSIPPI MARINE HULL # 90

**DESIGN ASSOCIATES, INC.**  
NAVAL ARCHITECTS MARINE ENGINEERS  
NEW ORLEANS, LA.

TIDEWATER MARINE SERVICE

143' X 36' X 10' SEISMIC VESSEL

GRID COOLERS PIPING DIAGRAM  
(SHEET ONE)

Drawn: B. AMOND	Date: 8/28/81	Checked: P.C.B.
Traced:	Date:	Checked:
Apprvd:	Date:	Scale: AS NOTED
Sheet 1 of 1	Drawing No. C-2062-35	Revision Mark